

Mars Exim Pvt. Ltd.

(A GOVT. OF INDIA RECOGNISED EXPORT HOUSE)

Industrial Area-C, Dr. Jain Road, Kanganwal

V.P.O- Jaspal Bangar, Ludhiana- 141122 INDIA

Phone :+91-161-3295076/77, E-mail : marsexim@gmail.com

1.DOORS&WINDOWS ACCESSORIES

1.1 HINGES



Heavy Hinges Fixed Pin
Size:1"-4",Thickness:0.8-1.6mm
Code No.DWHHH01



Light Hinges Fixed Pin
Size:1"-4",Thickness:0.7-1.0mm
Code No.DWHHH02



Heavy Hinges Fixed Pin
Size:1"-4",Thickness:0.8-1.6mm
Code No.DWHHH03



Steel Heavy Duty Htype Hinges
Size:80x50,95x55,110x55,140x60
Code No.DWHHH04



Steel Heavy Duty Htype Hinges
Size:80x50,95x55,110x55,140x60
Code No.DWHHH05



Steel Heavy Duty Htype Hinges
Size:80x50,95x55,110x55,140x60
Code No.DWHHH06



Light tyoe Hinges "T" Type
Size:3"-12",Thickness:1.0-2.2mm
Code No.DWHTH07



Heavy tyoe Hinges "T" Type
Size:3"-12",Thickness:1.0-3.2mm
Code No.DWHTH08



Bent Hinges
Art no:4"x3.1/2"x3.0mm
Code No.DWHTH09



Steel Welding Light Hinges
Size:60x30,80x30,100x30,120x30,140x30
Code No.DWHTH10



Steel Welding Heavy Hinges
Size:80,90,100,120,130,140,160
Code No.DWHTH11



Steel Welding Heavy Hinges
Size:1"-4",Thickness:0.8-1.6mm
Code No.DWHTH12

Mars Exim Pvt. Ltd.

(A GOVT. OF INDIA RECOGNISED EXPORT HOUSE)

Industrial Area-C, Dr. Jain Road, Kanganwal

V.P.O- Jaspal Bangar, Ludhiana- 141122 INDIA

Phone :+91-161-3295076/77, E-mail : marsexim@gmail.com



Round Hinges with hole
Size:6mm-24mm
Code No.DWHTH13



Round Hinges
Size:80,100,120,140
Code No.DWHTH14



Round Hinges
Size:80,100,120,140
Code No.DWHTH15



Flat Head Square Hinges with 4pcs
Size:4"x3"(SN)
Code No.DWHTH16



Flat Head Square Hinges with 4pcs
Size:3"x2.5"(SN)
Code No.DWHTH17



Flat Head Square Hinges with 4pcs
Size:4"x3"(GP)
Code No.DWHTH18



Flat Head Square Hinges with 4pcs
Size:4"x3"(CP)
Code No.DWHTH19



Flat Head Square Hinges with 4pcs
Size:4"x3"(AC)
Code No.DWHTH20



Flat Head Square Hinges with 4pcs
Size:4"x3"(AB)
Code No.DWHTH21



Ball Head Square Hinges with bearing
Size:3"x3",3.5"x3",4"x3",4"x3.5"(DC)
Code No.DWHTH22



Ball Head Square Hinges
Size:3"x2.5",3.5"x3",4"x3.5"
Code No.DWHTH23



Flat Head Loose Pin Hinges
Size:3"x3",3.5"x3.5",4"x4"
Code No.DWHTH24

Mars Exim Pvt. Ltd.

(A GOVT. OF INDIA RECOGNISED EXPORT HOUSE)

Industrial Area-C, Dr. Jain Road, Kanganwal

V.P.O- Jaspal Bangar, Ludhiana- 141122 INDIA

Phone :+91-161-3295076/77, E-mail : marsexim@gmail.com



Flat Head Square Hinges with 4pcs
Size:3"x3",3.5"x3",4"x3",4"x3.5"
Code No.DWHTH25



Lift-off Hinges Crown Head
Size:120mmX85mm(AB)
Code No.DWHTH26



Lift-off Hinges Crown Head
Size:120mmX85mm(AC)
Code No.DWHTH27



Spring Hinges Double-Action
Size:3"-6"
Code No.DWHTH28



Door Spring With Rod
Size:90 x 200,250,300mm
Code No.DWHTH29



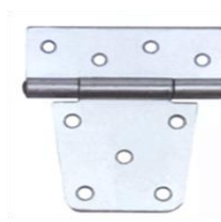
Middle type T Hinges
Size:250,300,350mm
Code No.DWHTH30



Heavy T type Hinges
Size:4"-12" ,Thickness:2.0-3.2mm
Code No.DWHTH31



Heavy T type Hinges
Size:4"-12" ,Thickness:2.0-3.2mm
Code No.DWHTH32



Heavy T type Hinges
Size:3.5",Thickness:2.8-3.2mm
Code No.DWHTH33



Lace duty T Hinges
Size:4"-8"
Code No.DWHTH34



Lace duty T Hinges
Size:4"-8"
Code No.DWHTH35



Lace duty T Hinges
Size:5"-8"
Code No.DWHTH36

Mars Exim Pvt. Ltd.

(A GOVT. OF INDIA RECOGNISED EXPORT HOUSE)

Industrial Area-C, Dr. Jain Road, Kanganwal

V.P.O- Jaspal Bangar, Ludhiana- 141122 INDIA

Phone :+91-161-3295076/77, E-mail : marsexim@gmail.com



Lace duty T Hinges
Size:13"
Code No.DWHTH37



Sollot type Light Hinges
Size:2"-6"
Code No.DWHTH38



Sollot type Heavy Hinges
Size:4"-12"
Code No.DWHTH39



Bed Hooks
Size:5" x 3.0mm
Code No.DWHTH40



Bed Clamps
Size:5" ,Thickness:0.8-1.2mm
Code No.DWHTH41



Bed Clamps
Size:95,120,150 ,Thickness:3.0-5.0mm
Code No.DWHTH42



Bed Clamps
Code No.DWHTH43



Bed Clamps
Code No.DWHTH44



Bed Clamps
Code No.DWHTH45

1.2 TOWER BOLTS



Tower Bolts N type
Size:3"-8"
Code No.DWTB01



Tower Bolts Double
Size:3"-8"
Code No.DWTB02



Tower Bolts GP
Size:2"-4"
Code No.DWTB03

Mars Exim Pvt. Ltd.

(A GOVT. OF INDIA RECOGNISED EXPORT HOUSE)

Industrial Area-C, Dr. Jain Road, Kanganwal

V.P.O- Jaspal Bangar, Ludhiana- 141122 INDIA

Phone :+91-161-3295076/77, E-mail : marsexim@gmail.com



Tower Bolts O type
Size:3"-8"
Code No.DWTB04



Tower Bolts G type
Size:3"-8"
Code No.DWTB05



Tower Bolts With Lock
Size:3"-10"
Code No.DWTB06



Tower Bolts Yellow Zinc Plated
Size:3"-8"
Code No.DWTB07



Tower Bolts Heavy Duty
Size:80-200mm
Code No.DWTB08



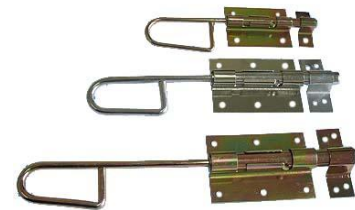
Tower Bolts Heavy Duty
Size:160-300mm
Code No.DWTB09



Tower Bolts ZX Type
Size:8"-16"
Code No.DWTB10



Tower Bolts XX Type
Size:8"-16"
Code No.DWTB11



Tower Bolts WX Type
Size:8"-16"
Code No.DWTB12



Tower Bolts T Type
Size:6"-12"
Code No.DWTB13



Tower Bolts Flat Type
Size:6"-12"
Code No.DWTB14



Tower Bolts Small Cup Board
Code No.DWTB15

Mars Exim Pvt. Ltd.

(A GOVT. OF INDIA RECOGNISED EXPORT HOUSE)

Industrial Area-C, Dr. Jain Road, Kanganwal

V.P.O- Jaspal Bangar, Ludhiana- 141122 INDIA

Phone :+91-161-3295076/77, E-mail : marsexim@gmail.com

1.3 HASPS&STAPLES



Hasps&Staples Wide Type
Size:1.5"-6"
Code No.DWHS01



Hasps&Staples Wire Type
Size:2"-6"
Code No.DWHS02



Hasps&Staples Color Type
Size:2"-6"
Code No.DWHS03



Hasps&Staples Heavy Type
Size:6"-8"
Code No.DWHS04



Hasps&Staples Heavy Type
Size:3"-8"
Code No.DWHS05



Door Pulls A Type
Size:3"-6"
Code No.DWHS06



Windows Handle
Code No.DWHS07



LOUVER WINDOWS FRAME
Size:3"-10"
Code No.DWHS08



Door Pulls D Type
Size:140MM
Code No.DWHS09

1.4 SCREWS HOOK & EYES



Screws Hook
Size:2#-18#
Code No.DWSH01



Cup Screws Hook
Size:2#-18#
Code No.DWSH02



Screws Eyes
Size:1"-14"
Code No.DWSH03

Mars Exim Pvt. Ltd.

(A GOVT. OF INDIA RECOGNISED EXPORT HOUSE)

Industrial Area-C, Dr. Jain Road, Kanganwal

V.P.O- Jaspal Bangar, Ludhiana- 141122 INDIA

Phone :+91-161-3295076/77, E-mail : marsexim@gmail.com



Screws Hook&Eye
Size:3"-12"
Code No.DWSH04



Cup Screws Hook L Type
Size:2#-18#
Code No.DWSH05

1.5 MAGNETIC CATCHES & ROLLER CATCHES



Magnetic Catches
Size:42mm
Code No.DWMC01



Magnetic Catches
Size:60mm
Code No.DWMC02



Magnetic Catches
Size:45mm
Code No.DWMC03



Magnetic Catches Round Type
Size:20mm
Code No.DWMC04



Magnetic Catches Brass
Size:40mm
Code No.DWMC05



Magnetic Catches Double Round
Size:40mm
Code No.DWMC06



Magnetic Catches Double Flat
Size:40mm
Code No.DWMC07



Magnetic Catches Double Square
Size:72mm
Code No.DWMC08



Double Roller Catcher
Art no:GP-04
Code No.DWMC09

Mars Exim Pvt. Ltd.

(A GOVT. OF INDIA RECOGNISED EXPORT HOUSE)

Industrial Area-C, Dr. Jain Road, Kanganwal

V.P.O- Jaspal Bangar, Ludhiana- 141122 INDIA

Phone :+91-161-3295076/77, E-mail : marsexim@gmail.com

1.6 SHELF BRACKETS



Shelf Bracket
Size:4"x5"-12"x14"
Code No.DWSB01



Shelf Bracket
Size:200x200-380x380mm
Code No.DWSB02



Shelf Bracket
Size:125x150-300x350mm
Code No.DWSB03



Shelf Bracket
Size:200x200mm
Code No.DWSB04



Shelf Bracket
Size:100x120-155x185mm
Code No.DWSB05



Shelf Bracket
Size:125x110-225x370mm
Code No.DWSB06



Shelf Bracket
Size:8",10",12",14"
Code No.DWSB07



Shelf Bracket
Size:8",10",12",14"
Code No.DWSB08

1.7 SCALE



PLATFORM BALANCE
Size:5Kgs-50Kgs
Code No.DWSP01



SPRING DIAL HOIST SCALE
Size:5Kgs-200Kgs
Code No.DWSP02



POCKET BALANCE
Size:25Kgs-150Kgs
Code No.DWSP03

Mars Exim Pvt. Ltd.

(A GOVT. OF INDIA RECOGNISED EXPORT HOUSE)

Industrial Area-C, Dr. Jain Road, Kanganwal

V.P.O- Jaspal Bangar, Ludhiana- 141122 INDIA

Phone :+91-161-3295076/77, E-mail : marsexim@gmail.com



ELECTRONIC PRICING SCALE

Size:3Kgs-30Kgs

Code No.DWSP04

1.8 SCAFFOLDING CLAMPS



ELECTRONIC PRICING SCALE

Size:3Kgs-30Kgs

Code No.DWSP05



ELECTRONIC PRICING SCALE

Size:60Kgs-600Kgs

Code No.DWSP06



SWEIL TYPE

Size:550-640G/PC

Code No.DWSC01

1.9 CHAIN



FIXED TYPE

Size:550-640G/PC

Code No.DWSC02



DOG CHAIN

Size:40" X 2.0/4.5mm

Code No.DWCC01



ANIMAL CHAIN

Size:6' X 16/45

Code No.DWCC02



CHAIN

Size:2.0-4.0mm X 10Y

Code No.DWCC03



PVC CHAIN

Size:M6 X 20Y,M8 X 20Y

Code No.DWCC04

Mars Exim Pvt. Ltd.

(A GOVT. OF INDIA RECOGNISED EXPORT HOUSE)

Industrial Area-C, Dr. Jain Road, Kanganwal

V.P.O- Jaspal Bangar, Ludhiana- 141122 INDIA

Phone :+91-161-3295076/77, E-mail : marsexim@gmail.com

1.9 OTHER



KEY LABEL
Size:100pcs-200Pcs/Box
Code No.DWOT01



FOOT PUMP
Size:55 X 100
Code No.DWOT02



FOOT PUMP
Size:38 X 450/500
Code No.DWOT03



FOOT PUMP
Size:55 X 100
Code No.DWOT04



FOOT PUMP
Size:55 X 100
Code No.DWOT05



FOOT PUMP
Size:55 X 100
Code No.DWOT06



CHALK LINE POWER KIT
Art no.3 in 1
Code No.DWOT07



CHALK LINE POWER KIT
Art no.2 in 1
Code No.DWOT08



CEMNT SPRAYR
Code No.DWOT09



COMBINNATION SHARPENING STONE
Size:6"/8" x 2" x 1"
Code No.DWOT10



HONING STONE
Size:6"/8" x 2" x 2"
Code No.DWOT11



CURTAIN ROD
Size:30,50,80,100FT
Code No.DWOT12

Mars Exim Pvt. Ltd.

(A GOVT. OF INDIA RECOGNISED EXPORT HOUSE)

Industrial Area-C, Dr. Jain Road, Kanganwal

V.P.O- Jaspal Bangar, Ludhiana- 141122 INDIA

Phone :+91-161-3295076/77, E-mail : marsexim@gmail.com



CURTAIN FITTING

Size:5086

Code No.DWOT13



CURTAIN HOOK

Size:BP,CP

Code No.DWOT14



MARBLE CHALK

Size:125X12X5MM

Code No.DWOT15



CHALK PEN

Size:8-10 X 74

Code No.DWOT16



DOOR VIEW

Size:200 x 60mm

Code No.DWOT17



DOOR VIEW

Size:200 x 60mm

Code No.DWOT18



DOOR VIEW

Size:200 x 60mm

Code No.DWOT19



DOOR STOP

Size:25,40,50mm

Code No.DWOT20

Mars Exim Pvt. Ltd.

(A GOVT. OF INDIA RECOGNISED EXPORT HOUSE)

Industrial Area-C, Dr. Jain Road, Kanganwal

V.P.O- Jaspal Bangar, Ludhiana- 141122 INDIA

Phone :+91-161-3295076/77, E-mail : marsexim@gmail.com

3.1 PLASTERING TROWEL



Plastering Trowel
SIZE:280*120mm
CODE NO.NFPT01



Plastering Trowel
SIZE:280*120mm
CODE NO.NFPT02



Plastering Trowel
SIZE:280*120mm
CODE NO.NFPT03



Plastering Trowel
SIZE:280*120mm
CODE NO.NFPT04



Plastering Trowel
SIZE:280*120mm
CODE NO.NFPT05



Plastering Trowel
SIZE:280*120mm
CODE NO.NFPT06



Plastering Trowel
SIZE:280*120mm
CODE NO.NFPT07



Plastering Trowel
SIZE:280*120mm
CODE NO.NFPT08



Plastering Trowel
SIZE:280*120mm
CODE NO.NFPT09



Plastering Trowel
SIZE:280*120mm
CODE NO.NFPT10



Plastering Trowel
SIZE:280*120mm
CODE NO.NFPT11



Plastering Trowel
SIZE:280*120mm
CODE NO.NFPT12



Plastering Trowel
SIZE:280*120mm
CODE NO.NFPT13



Plastering Trowel
SIZE:280*120mm
CODE NO.NFPT14



Plastering Trowel
SIZE:280*120mm
CODE NO.NFPT15



Plastering Trowel
SIZE:280*120mm
CODE NO.NFPT16

Mars Exim Pvt. Ltd.

(A GOVT. OF INDIA RECOGNISED EXPORT HOUSE)

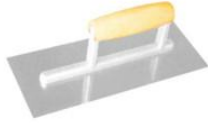
Industrial Area-C, Dr. Jain Road, Kanganwal

V.P.O- Jaspal Bangar, Ludhiana- 141122 INDIA

Phone :+91-161-3295076/77, E-mail : marsexim@gmail.com



Plastering Trowel
SIZE:280*120mm
CODE NO.NFPT17



Plastering Trowel
SIZE:280*120mm
CODE NO.NFPT18



Plastering Trowel
SIZE:280*120mm
CODE NO.NFPT19



Plastering Trowel
SIZE:280*120mm
CODE NO.NFPT20



Plastering Trowel
SIZE:280*120mm
CODE NO.NFPT21



Plastering Trowel
SIZE:280*120mm
CODE NO.NFPT22



Plastering Trowel
SIZE:280*120mm
CODE NO.NFPT23



Plastering Trowel
SIZE:280*120mm
CODE NO.NFPT24



Plastering Trowel
SIZE:280*120mm
CODE NO.NFPT25



Plastering Trowel
SIZE:280*120mm
CODE NO.NFPT26



Plastering Trowel
SIZE:280*120mm
CODE NO.NFPT27



Plastering Trowel
SIZE:280*120mm
CODE NO.NFPT28



Plastering Trowel
SIZE:280*130mm
CODE NO.NFPT29



Plastering Trowel
SIZE:280*130mm
CODE NO.NFPT30



Plastering Trowel
SIZE:280*130mm
CODE NO.NFPT31



Plastering Trowel
SIZE:280*130mm
CODE NO.NFPT32

Mars Exim Pvt. Ltd.

(A GOVT. OF INDIA RECOGNISED EXPORT HOUSE)

Industrial Area-C, Dr. Jain Road, Kanganwal

V.P.O- Jaspal Bangar, Ludhiana- 141122 INDIA

Phone :+91-161-3295076/77, E-mail : marsexim@gmail.com



Plastering Trowel
SIZE:280*130mm
CODE NO.NFPT33



Plastering Trowel
SIZE:280*130mm
CODE NO.NFPT34



Plastering Trowel
SIZE:280*130mm
CODE NO.NFPT35



Plastering Trowel
SIZE:280*130mm
CODE NO.NFPT36



Plastering Trowel
SIZE:280*130mm
CODE NO.NFPT37



Plastering Trowel
SIZE:280*130mm
CODE NO.NFPT38



Plastering Trowel
SIZE:280*130mm
CODE NO.NFPT39



Plastering Trowel
SIZE: 450*125mm
CODE NO.NFPT40



Plastering Trowel
SIZE:450*125mm
CODE NO.NFPT41



Plastering Trowel
SIZE:450*125mm
CODE NO.NFPT42



Plastering Trowel
SIZE:280*120mm
CODE NO.NFPT43



Plastering Trowel
SIZE:280*120mm
CODE NO.NFPT44



Plastering Trowel
SIZE:205*130mm, 210*135mm
CODE NO.NFPT45



Plastering Trowel
SIZE:205*130mm, 210*135mm
CODE NO.NFPT46



Plastering Trowel
SIZE:225*110mm
CODE NO.NFPT47



Plastering Trowel
SIZE:305*130mm
CODE NO.NFPT48

Mars Exim Pvt. Ltd.

(A GOVT. OF INDIA RECOGNISED EXPORT HOUSE)

Industrial Area-C, Dr. Jain Road, Kanganwal

V.P.O- Jaspal Bangar, Ludhiana- 141122 INDIA

Phone :+91-161-3295076/77, E-mail : marsexim@gmail.com

3.2 BRICKLAYING TROWEL



Bricklaying Trowel
SIZE:5", 6", 7", 8", 9", 10"
CODE NO.NFBT01



Bricklaying Trowel
SIZE: 60*80mm
CODE NO.NFBT02



Bricklaying Trowel
SIZE:5", 6", 7", 8", 9", 10"
CODE NO.NFBT03



Bricklaying Trowel
SIZE: 160mm, 180mm, 200mm, 220mm
CODE NO.NFBT04



Bricklaying Trowel
SIZE: 160mm
CODE NO.NFBT05



Bricklaying Trowel
SIZE:5", 6", 7", 8", 9", 10"
CODE NO.NFBT06



Bricklaying Trowel
SIZE: 160mm, 180mm, 200mm, SIZE:5", 6", 7", 8", 9", 10"
CODE NO.NFBT07



Bricklaying Trowel
CODE NO.NFBT08



Bricklaying Trowel
SIZE:5", 6", 7", 8", 9", 10"
CODE NO.NFBT09



Bricklaying Trowel
SIZE: 160mm, 180mm, 200mm, SIZE:5", 6", 7", 8", 9", 10"
CODE NO.NFBT10



Bricklaying Trowel
SIZE:5", 6", 7", 8", 9", 10"
CODE NO.NFBT11



Bricklaying Trowel
SIZE:5", 6", 7", 8", 9", 10"
CODE NO.NFBT12



Bricklaying Trowel
SIZE: 160mm, 180mm, 200mm, SIZE:5", 6", 7", 8", 9", 10"
CODE NO.NFBT13



Bricklaying Trowel
SIZE:5", 6", 7", 8", 9", 10"
CODE NO.NFBT14



Bricklaying Trowel
SIZE:5", 6", 7", 8", 9", 10", 11", 12"
CODE NO.NFBT15



Bricklaying Trowel
SIZE:5", 6", 7", 8", 9", 10"
CODE NO.NFBT16

Mars Exim Pvt. Ltd.

(A GOVT. OF INDIA RECOGNISED EXPORT HOUSE)

Industrial Area-C, Dr. Jain Road, Kanganwal

V.P.O- Jaspal Bangar, Ludhiana- 141122 INDIA

Phone :+91-161-3295076/77, E-mail : marsexim@gmail.com



Bricklayering Trowel

SIZE:160mm, 180mm, 200mm, 2
CODE NO.NFBT17



Bricklayering Trowel

SIZE:160mm, 180mm, 200mm, 2
CODE NO.NFBT18



Bricklayering Trowel

SIZE:160mm, 180mm, 200mm, 2
CODE NO.NFBT19



Bricklayering Trowel

SIZE:160mm, 180mm, 200mm, 220mm
CODE NO.NFBT20



Bricklayering Trowel

SIZE:160mm, 180mm, 200mm, 2
CODE NO.NFBT21



Bricklayering Trowel

SIZE:160mm, 180mm, 200mm, 2
CODE NO.NFBT22



Bricklayering Trowel

SIZE:5", 6", 7", 8", 9", 10"
CODE NO.NFBT23



Bricklayering Trowel

SIZE:160mm, 180mm, 200mm, 220mm
CODE NO.NFBT24



Bricklayering Trowel

SIZE:5", 6", 7", 8", 9", 10"
CODE NO.NFBT25



Bricklayering Trowel

SIZE:160mm, 180mm, 200mm, 2
CODE NO.NFBT26



Bricklayering Trowel

SIZE:5", 6", 7", 8", 9", 10"
CODE NO.NFBT27



Bricklayering Trowel

SIZE:160mm, 180mm, 200mm, 220mm
CODE NO.NFBT28



Bricklayering Trowel

SIZE:5", 6", 7", 8", 9", 10"
CODE NO.NFBT29



Bricklayering Trowel

SIZE:160mm, 180mm, 200mm, 2
CODE NO.NFBT30



Bricklayering Trowel

SIZE:5", 6", 7", 8", 9", 10"
CODE NO.NFBT31



Bricklayering Trowel

SIZE:5", 6", 7", 8", 9", 10"
CODE NO.NFBT32

Mars Exim Pvt. Ltd.

(A GOVT. OF INDIA RECOGNISED EXPORT HOUSE)

Industrial Area-C, Dr. Jain Road, Kanganwal

V.P.O- Jaspal Bangar, Ludhiana- 141122 INDIA

Phone :+91-161-3295076/77, E-mail : marsexim@gmail.com



Bricklayering Trowel

SIZE:160mm, 180mm, 200mm, 2
CODE NO.NFBT33



Bricklayering Trowel

SIZE:160mm, 180mm, 200mm, 2
CODE NO.NFBT34



Bricklayering Trowel

SIZE:160mm, 180mm, 200mm, 2
CODE NO.NFBT35



Bricklayering Trowel

SIZE:160mm, 180mm, 200mm, 220mm
CODE NO.NFBT36



Bricklayering Trowel

SIZE:160mm, 180mm, 200mm, 2
CODE NO.NFBT37



Bricklayering Trowel

SIZE:160mm, 180mm, 200mm, 2
CODE NO.NFBT38



Bricklayering Trowel

SIZE:5", 6", 7", 8", 9", 10"
CODE NO.NFBT39



Bricklayering Trowel

SIZE:5", 6", 7", 8", 9", 10"
CODE NO.NFBT40



Bricklayering Trowel

SIZE:5", 6", 7", 8", 9", 10"
CODE NO.NFBT41



Bricklayering Trowel

SIZE:5", 6", 7", 8", 9", 10"
CODE NO.NFBT42



Bricklayering Trowel

SIZE:5", 6", 7", 8", 9", 10"
CODE NO.NFBT43



Bricklayering Trowel

SIZE:5", 6", 7", 8", 9", 10"
CODE NO.NFBT44



Bricklayering Trowel

SIZE:5", 6", 7", 8", 9", 10"
CODE NO.NFBT45



Bricklayering Trowel

SIZE:160mm, 180mm, 200mm, 2
CODE NO.NFBT46



Bricklayering Trowel

SIZE:5", 6", 7", 8", 9", 10"
CODE NO.NFBT47



Bricklayering Trowel

SIZE:5", 6", 7", 8", 9", 10"
CODE NO.NFBT48

Mars Exim Pvt. Ltd.

(A GOVT. OF INDIA RECOGNISED EXPORT HOUSE)

Industrial Area-C, Dr. Jain Road, Kanganwal

V.P.O- Jaspal Bangar, Ludhiana- 141122 INDIA

Phone :+91-161-3295076/77, E-mail : marsexim@gmail.com



Bricklayering Trowel
SIZE:5", 6", 7", 8", 9", 10"
CODE NO.NFBT49



Bricklayering Trowel
SIZE:160mm, 180mm, 200mm, 220mm , 240mm
CODE NO.NFBT50

3.3 SCRAPER



Scraper
SIZE: 1"- 6"
CODE NO.NFSS01



Scraper
SIZE: 1"- 6"
CODE NO.NFSS02



Scraper
SIZE: 1"- 6"
CODE NO.NFSS03



Scraper
SIZE: 1"- 6"
CODE NO.NFSS04



Scraper
SIZE: 1"- 6"
CODE NO.NFSS05



Scraper
SIZE: 1"- 6"
CODE NO.NFSS06



Scraper
SIZE: 1"- 6"
CODE NO.NFSS07



Scraper
SIZE: 1"- 6"
CODE NO.NFSS08



Scraper
SIZE: 1"- 6"
CODE NO.NFSS09



Scraper
SIZE: 1"- 6"
CODE NO.NFSS10



Scraper
SIZE: 1"- 6"
CODE NO.NFSS11



Scraper
SIZE: 1"- 6"
CODE NO.NFSS12

Mars Exim Pvt. Ltd.

(A GOVT. OF INDIA RECOGNISED EXPORT HOUSE)

Industrial Area-C, Dr. Jain Road, Kanganwal

V.P.O- Jaspal Bangar, Ludhiana- 141122 INDIA

Phone :+91-161-3295076/77, E-mail : marsexim@gmail.com



Scraper

SIZE: 1"- 6"

CODE NO.NFSS13



Scraper

SIZE: 1"- 6"

CODE NO.NFSS14



Scraper

SIZE: 1"- 6"

CODE NO.NFSS15



Scraper

SIZE: 1"- 6"

CODE NO.NFSS16



Scraper

SIZE: 1"- 6"

CODE NO.NFSS17



Scraper

SIZE: 1"- 6"

CODE NO.NFSS18



Scraper

SIZE: 1"- 6"

CODE NO.NFSS19



Scraper

SIZE: 1"- 6"

CODE NO.NFSS20



Scraper

SIZE: 1"- 6"

CODE NO.NFSS21



Scraper

SIZE: 1"- 6"

CODE NO.NFSS22



Scraper

SIZE: 1"- 6"

CODE NO.NFSS23



Scraper

SIZE: 1"- 6"

CODE NO.NFSS24



Scraper

SIZE: 1"- 6"

CODE NO.NFSS25



Scraper

SIZE: 1"- 6"

CODE NO.NFSS26



Scraper

SIZE: 1"- 6"

CODE NO.NFSS27



Scraper

SIZE: 1"- 6"

CODE NO.NFSS28

Mars Exim Pvt. Ltd.

(A GOVT. OF INDIA RECOGNISED EXPORT HOUSE)

Industrial Area-C, Dr. Jain Road, Kanganwal

V.P.O- Jaspal Bangar, Ludhiana- 141122 INDIA

Phone :+91-161-3295076/77, E-mail : marsexim@gmail.com



Scraper
SIZE: 1"- 6"
CODE NO.NFSS29



Scraper
SIZE: 1"- 6"
CODE NO.NFSS30



Scraper
SIZE: 1"- 6"
CODE NO.NFSS31



Scraper
SIZE: 1"- 6"
CODE NO.NFSS32



Scraper
SIZE: 1"- 6"
CODE NO.NFSS33



Scraper
SIZE: 1"- 6"
CODE NO.NFSS34



Scraper
SIZE: 1"- 6"
CODE NO.NFSS35



Scraper
SIZE: 1"- 6"
CODE NO.NFSS36



Scraper
SIZE: 1"- 6"
CODE NO.NFSS37



Scraper
SIZE: 1"- 6"
CODE NO.NFSS38



Scraper
SIZE: 1"- 6"
CODE NO.NFSS39



Scraper
SIZE: 1"- 6"
CODE NO.NFSS40

3.4 WALL SCRAPER



SIZE: 1"-6"
CODE NO.NFWS01



SIZE: 150mm-600mm
CODE NO.NFWS02



SIZE: 120mm-250mm
CODE NO.NFWS03



SIZE: 120mm-250mm
CODE NO.NFWS04

Mars Exim Pvt. Ltd.

(A GOVT. OF INDIA RECOGNISED EXPORT HOUSE)

Industrial Area-C, Dr. Jain Road, Kanganwal

V.P.O- Jaspal Bangar, Ludhiana- 141122 INDIA

Phone :+91-161-3295076/77, E-mail : marsexim@gmail.com



SIZE: 3"- 6"
CODE NO.NFWS05



SIZE: 1.5"-4"
CODE NO.NFWS06



SIZE: 85 x 178mm- 250mm
CODE NO.NFWS07



SIZE: 85 x 120mm-250mm
CODE NO.NFWS08



SIZE: 180mm-300mm
CODE NO.NFWS09



SIZE: 50mm- 120mm
CODE NO.NFWS10



SIZE: 50mm-120mm
CODE NO.NFWS11



SIZE: 50 x 150mm-400mm
CODE NO.NFWS12

3.5 WOODWORKER TOOLS

3.4.1 BLADE



SINGLE BLADE
Size:2" x 190mm
CODE NO.HWWTB01



SINGLE BLADE WITH CAP
Size:2" x 190mm
CODE NO.HWWTB02



BLADE FOR BIRD
Size:2"
CODE NO.HWWTB03

3.4.2 SPOKE SHAVE



Size:9"
CODE NO.HWWTS01



Size:10"
CODE NO.HWWTS02

Mars Exim Pvt. Ltd.

(A GOVT. OF INDIA RECOGNISED EXPORT HOUSE)

Industrial Area-C, Dr. Jain Road, Kanganwal

V.P.O- Jaspal Bangar, Ludhiana- 141122 INDIA

Phone :+91-161-3295076/77, E-mail : marsexim@gmail.com

3.4.3 PLANE



SMOOTHING PLANE
CODE NO.HWWTPO1



SMOOTHING PLANE ART NO:3
CODE NO.HWWTPO2



SMOOTHING PLANE ART NO:3
CODE NO.HWWTPO3



SMOOTHING PLANE
CODE NO.HWWTPO4



SMOOTHING PLANE SET
CODE NO.HWWTPO5



SMOOTHING PLANE
CODE NO.HWWTPO6

3.6 CHISEL



4PCS CHISEL SET
Size:8"
CODE NO.HWWT01



4PCS CHISEL SET Double color
Size:8"
CODE NO.HWWT02



12PCS CARVING CHISEL SET
Size:6"
CODE NO.HWWT02



4PCS CHISEL SET
Size:8"
CODE NO.HWWT04



6PCS CHISEL SET
Size:8"
CODE NO.HWWT05



6PCS CARVING CHISEL SET
Size:6"
CODE NO.HWWT06

Mars Exim Pvt. Ltd.

(A GOVT. OF INDIA RECOGNISED EXPORT HOUSE)

Industrial Area-C, Dr. Jain Road, Kanganwal

V.P.O- Jaspal Bangar, Ludhiana- 141122 INDIA

Phone :+91-161-3295076/77, E-mail : marsexim@gmail.com



7PCS CHISEL SET PLASTIC BOX

Size:8"

CODE NO.HWWTC07



12PCS CARVING CHISEL SET

Size:6"

CODE NO.HWWTC08



12PCS CARVING CHISEL SET

Size:6"

CODE NO.HWWTC09

3.7 CLEAR BRUSH



NOORA BRUSH WOODEN

Size:7 X 15/17

CODE NO.HWCB01



NOORA BRUSH PVC

Size:7 X 15/17

CODE NO.HWCB02



NOORA BRUSH PVC

Size:7 X 15/17

CODE NO.HWCB03



CARPET BRUSH

Size:6 X 29MM

CODE NO.HWCB04



CARPET BRUSH

Size:6 X 29MM

CODE NO.HWCB05



DECK BRUSH PVC

Size:65 X 290MM

CODE NO.HWCB06



DECK BRUSH WOODEN

Size:65 X 290/400MM

CODE NO.HWCB07



DECK BRUSH WOODEN

Size:65 X 290/400MM

CODE NO.HWCB08



DECK BRUSH WOODEN WITH HANDLE

Size:65 X 290/400MM

CODE NO.HWCB09

Mars Exim Pvt. Ltd.

(A GOVT. OF INDIA RECOGNISED EXPORT HOUSE)

Industrial Area-C, Dr. Jain Road, Kanganwal

V.P.O- Jaspal Bangar, Ludhiana- 141122 INDIA

Phone :+91-161-3295076/77, E-mail : marsxim@gmail.com

4.GARDEN TOOLS

4.1 HEDGE SHEARS



HEDGE SHEARS
Size:25"-33"
CODE NO.GTHS-01



HEDGE SHEARS
Size:36-34"
CODE NO.GTHS-02



HEDGE SHEARS
Size:22"
CODE NO.GTHS-03



HEDGE SHEARS
Size:22"
CODE NO.GTHS-04



HEDGE SHEARS
Size:22"
CODE NO.GTHS-04



HEDGE SHEARS
Size:22"
CODE NO.GTHS-04



HEDGE SHEARS
Size:20"
CODE NO.GTHS-07



HEDGE SHEARS
Size:20"
CODE NO.GTHS-08



HEDGE SHEARS
Size:19"
CODE NO.GTHS-09



HEDGE SHEARS
Size:25-33"
CODE NO.GTHS-10



HEDGE SHEARS
Size:16"
CODE NO.GTHS-11



HEDGE SHEARS
Size:8"
CODE NO.GTHS-12



HEDGE SHEARS
Size:8"
CODE NO.GTHS-13



HEDGE SHEARS
Size:21"
CODE NO.GTHS-14

Mars Exim Pvt. Ltd.

(A GOVT. OF INDIA RECOGNISED EXPORT HOUSE)

Industrial Area-C, Dr. Jain Road, Kanganwal

V.P.O- Jaspal Bangar, Ludhiana- 141122 INDIA

Phone :+91-161-3295076/77, E-mail : marsexim@gmail.com

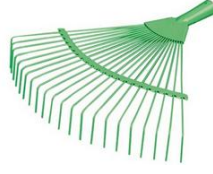
4.2 GARDEN RAKE



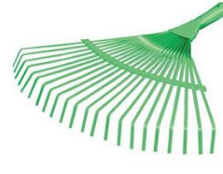
GARDEN RAKE
Size:50x40 (18t)
CODE NO.GTGR-01



GARDEN RAKE
Size:30x20.5 (11t)
CODE NO.GTGR-02



GARDEN RAKE
Size:39x38 (22t)
CODE NO.GTGR-03



GARDEN RAKE
Size:39x38 (22t)
CODE NO.GTGR-04



GARDEN RAKE
Size:44x42 (22t)
CODE NO.GTGR-05



GARDEN RAKE
Size:46x42 (22t)
CODE NO.GTGR-06



GARDEN RAKE
Size:51x48 (22t)
CODE NO.GTGR-07



GARDEN RAKE
Size:42x41 (22t)
CODE NO.GTGR-08



GARDEN RAKE
Size:43x42 (22t)
CODE NO.GTGR-09



GARDEN RAKE
Size:46x42 (22t)
CODE NO.GTGR-10



GARDEN RAKE
Size:33x10x12.5
CODE NO.GTGR-11



GARDEN RAKE
Size:37x10x12.5
CODE NO.GTGR-12



GARDEN RAKE
Size:36x8x10
CODE NO.GTGR-13



GARDEN RAKE
Size:36x8x10
CODE NO.GTGR-14



GARDEN RAKE
Size:30x7x11
CODE NO.GTGR-15



GARDEN RAKE
Size:38x7.5x19
CODE NO.GTGR-16



GARDEN RAKE
Size:38x9x10
CODE NO.GTGR-17



GARDEN RAKE
Size:38x9x10
CODE NO.GTGR-18



GARDEN RAKE
Size:15x6.5x8
CODE NO.GTGR-18



GARDEN RAKE
Size:38x7.5x19
CODE NO.GTGR-18

Mars Exim Pvt. Ltd.

(A GOVT. OF INDIA RECOGNISED EXPORT HOUSE)

Industrial Area-C, Dr. Jain Road, Kanganwal

V.P.O- Jaspal Bangar, Ludhiana- 141122 INDIA

Phone :+91-161-3295076/77, E-mail : marsexim@gmail.com

4.3 GARDEEN TOOLS SET



CODE NO.GTGS-01



CODE NO.GTGS-02



CODE NO.GTGS-03



CODE NO.GTGS-04



CODE NO.GTGS-05



CODE NO.GTGS-06



CODE NO.GTGS-07



CODE NO.GTGS-08



CODE NO.GTGS-09



CODE NO.GTGS-10



CODE NO.GTGS11



CODE NO.GTGS-12

4.4 BOW SAW



CODE NO.GTBS-01



CODE NO.GTBS-02



CODE NO.GTBS-03

Mars Exim Pvt. Ltd.

(A GOVT. OF INDIA RECOGNISED EXPORT HOUSE)

Industrial Area-C, Dr. Jain Road, Kanganwal

V.P.O- Jaspal Bangar, Ludhiana- 141122 INDIA

Phone :+91-161-3295076/77, E-mail : marsexim@gmail.com



CODE NO.GTBS-04

4.5 PRUNING SHEARS



CODE NO.GTBS-05



CODE NO.GTBS-06



CODE NO.GTPS-01



CODE NO.GTPS-02



CODE NO.GTPS-03



CODE NO.GTPS-04



CODE NO.GTPS-05



CODE NO.GTPS-06



CODE NO.GTPS-07



CODE NO.GTPS-08



CODE NO.GTPS-09

Mars Exim Pvt. Ltd.

(A GOVT. OF INDIA RECOGNISED EXPORT HOUSE)

Industrial Area-C, Dr. Jain Road, Kanganwal

V.P.O- Jaspal Bangar, Ludhiana- 141122 INDIA

Phone :+91-161-3295076/77, E-mail : marsexim@gmail.com

5. HOUSE CLEANING

5.1 BROOM



CODE NO.HGBR1101



CODE NO.HGBR1102 CODE NO.HGBR1103



CODE NO.HGBR1104



CODE NO.HGBR1105



CODE NO.HGBR1106 CODE NO.HGBR1107



CODE NO.HGBR1108



CODE NO.HGBR1110



CODE NO.HGBR1111 CODE NO.HGBR1112



CODE NO.HGBR1115



CODE NO.HGBR1118



CODE NO.HGBR1120

Mars Exim Pvt. Ltd.

(A GOVT. OF INDIA RECOGNISED EXPORT HOUSE)

Industrial Area-C, Dr. Jain Road, Kanganwal

V.P.O- Jaspal Bangar, Ludhiana- 141122 INDIA

Phone :+91-161-3295076/77, E-mail : marsexim@gmail.com

5. HOUSE CLEANING

5.2 FLAT MOP



CODE NO.HGFM1801 CODE NO.HGFM1802 CODE NO.HGFM1803 CODE NO.HGFM1804 CODE NO.HGFM1808



CODE NO.HGFM1810 CODE NO.HGFM1819 CODE NO.HGFM1824 CODE NO.HGFM1825 CODE NO.HGFM1826



CODE NO.HGFM1827 CODE NO.HGFM1828 CODE NO.HGFM1829 CODE NO.HGFM1835 CODE NO.HGFM1836



CODE NO.HGFM1837 CODE NO.HGFM1838 CODE NO.HGFM1839 CODE NO.HGFM1840 CODE NO.HGFM1841



Mars Exim Pvt. Ltd.

(A GOVT. OF INDIA RECOGNISED EXPORT HOUSE)

Industrial Area-C, Dr. Jain Road, Kanganwal
V.P.O- Jaspal Bangar, Ludhiana- 141122 INDIA
Phone :+91-161-3295076/77, E-mail : marsexim@gmail.com

5. HOUSE CLEANING

5.3 COTTON MOP



CODE NO.HGFM1813 CODE NO.HGFM1815 CODE NO.HGFM1830 CODE NO.HGFM1831 CODE NO.HGFM1832



CODE NO.HGFM1833 CODE NO.HGFM1834 CODE NO.HGFM1835 CODE NO.HGFM1836

5.4 WINDOW SQUEEGEE



CODE NO.HGWQ3802 CODE NO.HGWQ3823 CODE NO.HGWQ1828 CODE NO.HGWQ3805 CODE NO.HGWQ3806

5.5 MICROFIBER DUSTER



CODE NO.HGMD3812

CODE NO.HGMD3818 CODE NO.HGMD3824

CODE NO.HGMD3825

Mars Exim Pvt. Ltd.

(A GOVT. OF INDIA RECOGNISED EXPORT HOUSE)

Industrial Area-C, Dr. Jain Road, Kanganwal

V.P.O- Jaspal Bangar, Ludhiana- 141122 INDIA

Phone :+91-161-3295076/77, E-mail : marsexim@gmail.com

5. HOUSE CLEANING



CODE NO.HGMD3830

5.6 LADDER



CODE NO.HTSL102 CODE NO.HTSL202



CODE NO.HTSL302



CODE NO.HTSL402



CODE NO.HTSL502 CODE NO.HTSL602



CODE NO.HTSL702



CODE NO.HTSL802

Mars Exim Pvt. Ltd.

(A GOVT. OF INDIA RECOGNISED EXPORT HOUSE)

Industrial Area-C, Dr. Jain Road, Kanganwal

V.P.O- Jaspal Bangar, Ludhiana- 141122 INDIA

Phone :+91-161-3295076/77, E-mail : marsxim@gmail.com

6.1 BOLTS



CODE NO:FSGB01



CODE NO:FSGB02



CODE NO:FSGB03



CODE NO:FSGB04



CODE NO:FSGB05



CODE NO:FSGB06



CODE NO:FSGB07



CODE NO:FSGB08



CODE NO:FSGB09



CODE NO:FSGB10



CODE NO:FSGB11



CODE NO:FSGB12



CODE NO:FSGB13



CODE NO:FSGB14



CODE NO:FSGB15

Mars Exim Pvt. Ltd.

(A GOVT. OF INDIA RECOGNISED EXPORT HOUSE)

Industrial Area-C, Dr. Jain Road, Kanganwal

V.P.O- Jaspal Bangar, Ludhiana- 141122 INDIA

Phone :+91-161-3295076/77, E-mail : marsxim@gmail.com



CODE NO:FSGB16



CODE NO:FSGB17

6.2 NUTS



CODE NO:FSGN01



CODE NO:FSGN02



CODE NO:FSGN03



CODE NO:FSGN04



CODE NO:FSGN05



CODE NO:FSGN06



CODE NO:FSGN07



CODE NO:FSGN08

6.3 WASHER



CODE NO:FSGW01



CODE NO:FSGW02



CODE NO:FSGW03

Mars Exim Pvt. Ltd.

(A GOVT. OF INDIA RECOGNISED EXPORT HOUSE)

Industrial Area-C, Dr. Jain Road, Kanganwal

V.P.O- Jaspal Bangar, Ludhiana- 141122 INDIA

Phone :+91-161-3295076/77, E-mail : marsexim@gmail.com



CODE NO:FSGW04

6.4 THREAD BAR



CODE NO:FSGW05



CODE NO:FSGW06



CODE NO:FSTB01

6.5 ANCHOR

6.5.1 STEEL ANCHOR



CODE NO:FSSA01



CODE NO:FSSA02



CODE NO:FSSA03



CODE NO:FSSA04



CODE NO:FSSA05



CODE NO:FSSA06



CODE NO:FSSA07



CODE NO:FSSA08



CODE NO:FSSA09



CODE NO:FSSA10



CODE NO:FSSA11



CODE NO:FSSA12

Mars Exim Pvt. Ltd.

(A GOVT. OF INDIA RECOGNISED EXPORT HOUSE)

Industrial Area-C, Dr. Jain Road, Kanganwal

V.P.O- Jaspal Bangar, Ludhiana- 141122 INDIA

Phone :+91-161-3295076/77, E-mail : marsxim@gmail.com



CODE NO:FSSA13



CODE NO:FSSA14



CODE NO:FSSA15



CODE NO:FSSA16



CODE NO:FSSA17



CODE NO:FSSA18



CODE NO:FSSA19



CODE NO:FSSA20



CODE NO:FSSA21



CODE NO:FSSA22



CODE NO:FSSA23



CODE NO:FSSA24

6.5.2 NYLON ANCHOR



CODE NO:FSNA01



CODE NO:FSSA02



CODE NO:FSSA03



CODE NO:FSSA04



CODE NO:FSNA05



CODE NO:FSSA06



CODE NO:FSSA07



CODE NO:FSSA08

Mars Exim Pvt. Ltd.

(A GOVT. OF INDIA RECOGNISED EXPORT HOUSE)

Industrial Area-C, Dr. Jain Road, Kanganwal

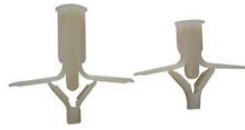
V.P.O- Jaspal Bangar, Ludhiana- 141122 INDIA

Phone :+91-161-3295076/77, E-mail : marsxim@gmail.com



CODE NO:FSNA09

6.6 HOSE CLAMPS



CODE NO:FSSA10



CODE NO:FSSA11



CODE NO:FSHC01



CODE NO:FSHC02



CODE NO:FSHC03



CODE NO:FSHC04



CODE NO:FSHC05



CODE NO:FSHC06



CODE NO:FSHC07



CODE NO:FSHC08



CODE NO:FSHC09



CODE NO:FSHC10



CODE NO:FSHC11



CODE NO:FSHC12

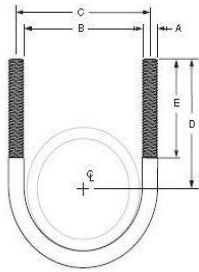
Mars Exim Pvt. Ltd.

(A GOVT. OF INDIA RECOGNISED EXPORT HOUSE)

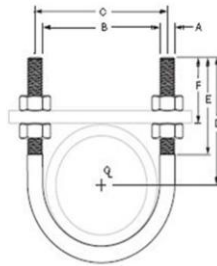
Industrial Area-C, Dr. Jain Road, Kanganwal

V.P.O- Jaspal Bangar, Ludhiana- 141122 INDIA

Phone :+91-161-3295076/77, E-mail : marsexim@gmail.com



CODE NO:FSHC13



CODE NO:FSHC14



CODE NO:FSHC15



CODE NO:FSHC16



CODE NO:FSHC17



CODE NO:FSHC18



CODE NO:FSHC19

6.7 SCREWS



CODE NO:FSHC20



CODE NO:FSHC21



CODE NO:FSGS01



CODE NO:FSGS02



CODE NO:FSGS03



CODE NO:FSGS04



CODE NO:FSGS05



CODE NO:FSGS06

Mars Exim Pvt. Ltd.

(A GOVT. OF INDIA RECOGNISED EXPORT HOUSE)

Industrial Area-C, Dr. Jain Road, Kanganwal

V.P.O- Jaspal Bangar, Ludhiana- 141122 INDIA

Phone :+91-161-3295076/77, E-mail : marsexim@gmail.com



CODE NO:FSGS07



CODE NO:FSGS08



CODE NO:FSGS09



CODE NO:FSGS10



CODE NO:FSGS11



CODE NO:FSGS12



CODE NO:FSGS13



CODE NO:FSGS14



CODE NO:FSGS15



CODE NO:FSGS16



CODE NO:FSGS17



CODE NO:FSGS18



CODE NO:FSGS19



CODE NO:FSGS20

Mars Exim Pvt. Ltd.

(A GOVT. OF INDIA RECOGNISED EXPORT HOUSE)

Industrial Area-C, Dr. Jain Road, Kanganwal

V.P.O- Jaspal Bangar, Ludhiana- 141122 INDIA

Phone :+91-161-3295076/77, E-mail : marsexim@gmail.com

7.2 FACE MASK



CODE NO.CPFM01



CODE NO.CPFM02



CODE NO.CPFM03



CODE NO.CPFM04



CODE NO.CPFM05



CODE NO.CPFM06

7.3 SAFETY BELT

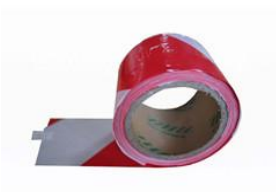


CODE NO.CPSB01



CODE NO.CPSB02

7.4 WARNING TAPE



CODE NO.CPWT01



CODE NO.CPWT02



CODE NO.CPWT03

Mars Exim Pvt. Ltd.

(A GOVT. OF INDIA RECOGNISED EXPORT HOUSE)

Industrial Area-C, Dr. Jain Road, Kanganwal

V.P.O- Jaspal Bangar, Ludhiana- 141122 INDIA

Phone :+91-161-3295076/77, E-mail : marsexim@gmail.com

7.5 RATCHET TIE DOWN



CODE NO.CPRT01



CODE NO.CPRT02



CODE NO.CPRT03



CODE NO.CPRT04



CODE NO.CPRT05



CODE NO.CPRT06



CODE NO.CPRT07



CODE NO.CPRT21



CODE NO.CPRT22



CODE NO.CPRT23



CODE NO.CPRT24



CODE NO.CPRT25



CODE NO.CPRT26



CODE NO.CPRT27



CODE NO.CPRT28

Mars Exim Pvt. Ltd.

(A GOVT. OF INDIA RECOGNISED EXPORT HOUSE)

Industrial Area-C, Dr. Jain Road, Kanganwal

V.P.O- Jaspal Bangar, Ludhiana- 141122 INDIA

Phone :+91-161-3295076/77, E-mail : marsexim@gmail.com



CODE NO.CPRT29

CODE NO.CPRT30

CODE NO.CPRT31

7.6 TOW ROPE



CODE NO.CPTR01

CODE NO.CPTR02

CODE NO.CPTR03

CODE NO.CPTR04



CODE NO.CPTR05

CODE NO.CPTR06

CODE NO.CPTR07

CODE NO.CPTR08



CODE NO.CPTR09

CODE NO.CPTR10

CODE NO.CPTR11

CODE NO.CPTR12

Mars Exim Pvt. Ltd.

(A GOVT. OF INDIA RECOGNISED EXPORT HOUSE)

Industrial Area-C, Dr. Jain Road, Kanganwal

V.P.O- Jaspal Bangar, Ludhiana- 141122 INDIA

Phone :+91-161-3295076/77, E-mail : marsexim@gmail.com



CODE NO.CPTR13



CODE NO.CPTR14



CODE NO.CPTR15



CODE NO.CPTR16



CODE NO.CPTR17

7.7 LUGGAGE STRAP



CODE NO.CPLS01



CODE NO.CPLS02



CODE NO.CPLS03



CODE NO.CPLS04



CODE NO.CPLS05



CODE NO.CPLS06



CODE NO.CPLS07



CODE NO.CPLS08

Mars Exim Pvt. Ltd.

(A GOVT. OF INDIA RECOGNISED EXPORT HOUSE)

Industrial Area-C, Dr. Jain Road, Kanganwal

V.P.O- Jaspal Bangar, Ludhiana- 141122 INDIA

Phone :+91-161-3295076/77, E-mail : marsexim@gmail.com

7.8 EAR PROTECT



CODE NO.CPEP01



CODE NO.CPEP02



CODE NO.CPEP03



CODE NO.CPEP04

7.9 WELDING MASK



CODE NO.CPWM01



CODE NO.CPWM02



CODE NO.CPWM03



CODE NO.CPWM04



CODE NO.CPWM05



CODE NO.CPWM06

7.10 PROTECT MASK



CODE NO.CPPM01



CODE NO.CPPM02



CODE NO.CPPM03

Mars Exim Pvt. Ltd.

(A GOVT. OF INDIA RECOGNISED EXPORT HOUSE)

Industrial Area-C, Dr. Jain Road, Kanganwal

V.P.O- Jaspal Bangar, Ludhiana- 141122 INDIA

Phone :+91-161-3295076/77, E-mail : marsexim@gmail.com

7.11 PROTECT GOGGLE&WELDING GOGGLE



CODE NO.CPPG01



CODE NO.CPPG02



CODE NO.CPWG01



CODE NO.CPWG02

7.12 SAFETY HELMET



CODE NO.CPSH01



CODE NO.CPSH02

7.13 PROTECT GLOVE



CODE NO.CPPG01



CODE NO.CPPG02



CODE NO.CPPG3



CODE NO.CPPG04



CODE NO.CPPG05



CODE NO.CPPG06



CODE NO.CPPG7



CODE NO.CPPG08

Mars Exim Pvt. Ltd.

(A GOVT. OF INDIA RECOGNISED EXPORT HOUSE)

Industrial Area-C, Dr. Jain Road, Kanganwal

V.P.O- Jaspal Bangar, Ludhiana- 141122 INDIA

Phone :+91-161-3295076/77, E-mail : marsexim@gmail.com

7.14 PROTECT SET



CODE NO.CPPS01



CODE NO.CPPS02

7.14 PROTECT OTHER



CODE NO.CPOP01



CODE NO.CPOP02

7.15 GAS MASK



CHEMICAL GAS MASK
CODE NO.CPGM01



DOUBLE FILTER GAS MASK
CODE NO.CPGM02



CHEMICAL GAS MASK
CODE NO.CPGM03



CODE NO.CPGM04



CODE NO.CPGM05



CODE NO.CPGM06

Mars Exim Pvt. Ltd.

(A GOVT. OF INDIA RECOGNISED EXPORT HOUSE)

Industrial Area-C, Dr. Jain Road, Kanganwal

V.P.O- Jaspal Bangar, Ludhiana- 141122 INDIA

Phone :+91-161-3295076/77, E-mail : marsexim@gmail.com

7.16 COWHIGE SMOCK



CODE NO.CPCS01



CODE NO.CPCS02



CODE NO.CPCS03



CODE NO.CPCS04



CODE NO.CPCS05



CODE NO.CPCS06

7.17 LADOR PROTECTIVE SHOE



CODE NO.CPLS01



CODE NO.CPLS02



CODE NO.CPLS03



CODE NO.CPLS04



CODE NO.CPLS05



CODE NO.CPLS06

Mars Exim Pvt. Ltd.

(A GOVT. OF INDIA RECOGNISED EXPORT HOUSE)

Industrial Area-C, Dr. Jain Road, Kanganwal

V.P.O- Jaspal Bangar, Ludhiana- 141122 INDIA

Phone :+91-161-3295076/77, E-mail : marsexim@gmail.com



CODE NO.CPLS07



CODE NO.CPLS08



CODE NO.CPLS09



CODE NO.CPLS10



CODE NO.CPLS11



CODE NO.CPLS12

Mars Exim Pvt. Ltd.

(A GOVT. OF INDIA RECOGNISED EXPORT HOUSE)

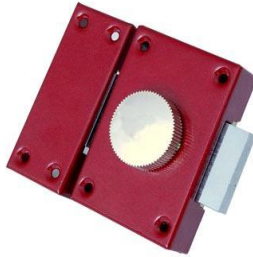
Industrial Area-C, Dr. Jain Road, Kanganwal
 V.P.O- Jaspal Bangar, Ludhiana- 141122 INDIA
 Phone :+91-161-3295076/77, E-mail : marsexim@gmail.com

9.LOCK 9.1 DOOR LOCK



Model:9219 锌头(红古铜)

CODE NO.DL9219



CODE NO.DL7632



CODE NO.DL5582



CODE NO.DL111



CODE NO.DL111



CODE NO.DL9001



CODE NO.DL105



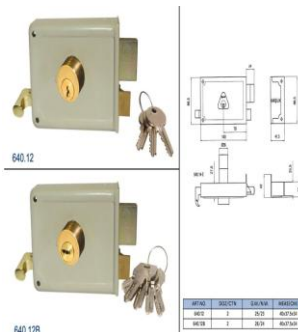
CODE NO.DL116



CODE NO.DL9001



CODE NO.DL116



CODE NO.DL640



CODE NO.DL563

Mars Exim Pvt. Ltd.

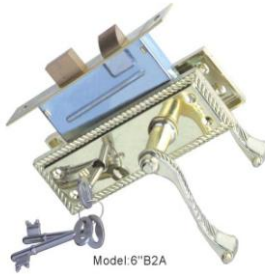
(A GOVT. OF INDIA RECOGNISED EXPORT HOUSE)

Industrial Area-C, Dr. Jain Road, Kanganwal

V.P.O- Jaspal Bangar, Ludhiana- 141122 INDIA

Phone :+91-161-3295076/77, E-mail : marsexim@gmail.com

9.2 MORTISE LOCKSET



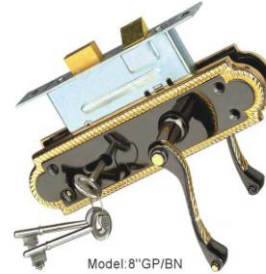
Model: 6''B2A

CODE NO.ML6''-B2A



Model: 8''B1A

CODE NO.ML8''-B1A



Model: 8''GP/BN

CODE NO.ML8''-GP/BN



Model: 116G

CODE NO.ML116G



Model: 0127A C

CODE NO.ML0127AC



Model: 129

CODE NO.ML129



Model: 0223A

CODE NO.ML0223A



Model: 0225

CODE NO.ML0225



Model: 303T

CODE NO.ML303T



Model: 316

CODE NO.ML316



Model: 501

CODE NO.ML510



Model: 516

CODE NO.ML516

Mars Exim Pvt. Ltd.

(A GOVT. OF INDIA RECOGNISED EXPORT HOUSE)

Industrial Area-C, Dr. Jain Road, Kanganwal

V.P.O- Jaspal Bangar, Ludhiana- 141122 INDIA

Phone :+91-161-3295076/77, E-mail : marsexim@gmail.com



Model:658

CODE NO.ML658



Model:687-3495S

CODE NO.ML687-3495S



Model:692-3495

CODE NO.ML692-3495



Model:693SD(SS)

CODE NO.ML693SDSS



Model:746

CODE NO.ML746



Model:754

CODE NO.ML754



Model:802

CODE NO.ML802



Model:910-2495G

CODE NO.ML910-2495G



Model:910

CODE NO.ML910



Model:2567

CODE NO.ML2567



Model:2568

CODE NO.ML2568



Model:9332S8

CODE NO.ML9332S8

Mars Exim Pvt. Ltd.

(A GOVT. OF INDIA RECOGNISED EXPORT HOUSE)

Industrial Area-C, Dr. Jain Road, Kanganwal
V.P.O- Jaspal Bangar, Ludhiana- 141122 INDIA
Phone :+91-161-3295076/77, E-mail : marsexim@gmail.com



Model: 9672S8

CODE NO.ML9672S8



Model: 9702

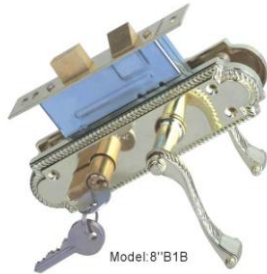
CODE NO.ML9702



Model: PA-121

CODE NO.MLPA-121

9.3 MORTISE LOCKSET WITH CYLINDER



Model: 8"B1B

CODE NO.MLC8"B1B



Model: 693CLD

CODE NO.MLC693CLD



Model: 693CSS

CODE NO.MLC693CSS



Model: 9702CLD

CODE NO.MLC9702CLD



Model: RA-609C

CODE NO.MLCRA609C



Model: RA-625C

CODE NO.MLCRA625C

9.3 LOCK BODY



304

CODE NO.MLLB304



Model: 460

CODE NO.MLLB460



Model: 732

CODE NO.MLLB732

Mars Exim Pvt. Ltd.

(A GOVT. OF INDIA RECOGNISED EXPORT HOUSE)

Industrial Area-C, Dr. Jain Road, Kanganwal
V.P.O- Jaspal Bangar, Ludhiana- 141122 INDIA
Phone :+91-161-3295076/77, E-mail : marsexim@gmail.com



Model: 940

CODE NO.MLLB940



Model: 2141

CODE NO.MLLB2141



2294 2.5"

2294 3"

CODE NO.MLLB2294



5435

CODE NO.MLLB5453



Model: 5588

CODE NO.MLLB5588



Model: 7011

CODE NO.MLLB7011



8540-8545

CODE NO.MLLB8540

9.4 STEEL PADLOCK



9011(85x45)

CODE NO.MLLB9011



7255-7260

CODE NO.MLLB7255



CODE NO.PLST01



CODE NO.PLST02



CODE NO.PLST03

Mars Exim Pvt. Ltd.

(A GOVT. OF INDIA RECOGNISED EXPORT HOUSE)

Industrial Area-C, Dr. Jain Road, Kanganwal
V.P.O- Jaspal Bangar, Ludhiana- 141122 INDIA
Phone :+91-161-3295076/77, E-mail : marsexim@gmail.com



CODE NO.PLST04



CODE NO.PLST05



CODE NO.PLST06



CODE NO.PLST07



CODE NO.PLST08



CODE NO.PLST09



CODE NO.PLST10

9.4 BRASS PADLOCK



CODE NO.PLST11



CODE NO.PLST12



CODE NO.PLBR01



CODE NO.PLBR02



CODE NO.PLBR03